

中期計画

(2019～2021)

大阪インターナショナルスクール

責任者名:Myles Jackson

【3年間の運営方針】3 year operational objectives	【3年後のありたい状態】 State 3 years from now
<p><u>1. 人材育成、教育の方針</u> <u>Human resource development, educational objectives</u></p> <p>KG school motto → OIS school mission Mastery for Service → Informed, caring creative individuals contributing to a global community.</p> <p>OIS will deliver a high quality K-12 education based upon the curricular framework of the three IB (PYP, MYP, DP) programmes.</p> <p>IB mission statement</p> <p>The International Baccalaureate aims to develop inquiring, knowledgeable and caring young people who help to create a better and more peaceful world through intercultural understanding and respect.</p>	<p>Clear understanding from whole community of the mission, the goals of the school and its role within the foundation.</p>
<p><u>2. 児童・生徒獲得の方針</u>(箇条書きもしくは文章で) <u>Objectives for student enrollment</u></p> <ul style="list-style-type: none">• Local and international recruitment Advertising and outreach Overseas recruiting fair/agent relations• All grades at or above published numbers K-2 and 11, 12 in particular• Dormitory program	<p>To have met the goal of a 300 student population for OIS.</p>
<p><u>3. 中期的な課題</u>(箇条書きで) <u>Medium term topics</u></p> <p>Medium term topics drawn from the work done with WASC and IB as well a recognition of operational issues important to the long term future of the school.</p> <ol style="list-style-type: none">1. Facility improvement2. Resource management - budget transparency3. Assessment4. Learning support structure5. Professional collaboration6. Enrollment7. Personnel & professional development	

【重点施策】main strategies	【中期総合経営計画 実施計画】として取り組むものに○
(中期的課題を解決するための重点施策を箇条書きしてください。「中期総合経営計画」の実施計画がある場合は、第1順位にしてください。優先順位の高いもの5つ程度)	
① 総合学園の「見える化」と関西学院アイデンティティの浸透	○
② Facility improvement Senri Campus facility improvement plan	
③ Enrollment: Advertising targeting local community Advertising and recruitment targeting overseas students (GFP) Clear goal for 2019 incoming head of school	
④ Assessment & Learning Support Commitment to systems for monitoring and managing assessment (MAP, ManageBac) system to support assessment practice. Professional development for all components.	
⑤ Personnel and professional development Expand professional development opportunities. Consider terms of employment within the context of Japanese international schools as well as further afield in Asia and beyond.	

【3年間の取り組み状況(中期計画)を測る指標】

Annual surveys to parents, teachers and students. A range of questions about campus facilities. Maintain high enrollment and aim for 80%+ boarding capacity, in balance with SIS numbers. Data driven dialogues based on standardised test data (MAP) used to set targets. All full time faculty, leadership and governance team members take part in annual professional learning.

【目標や実績を踏まえた次年度に向けた展望】(2019年10月時点)

Outlook for the next year

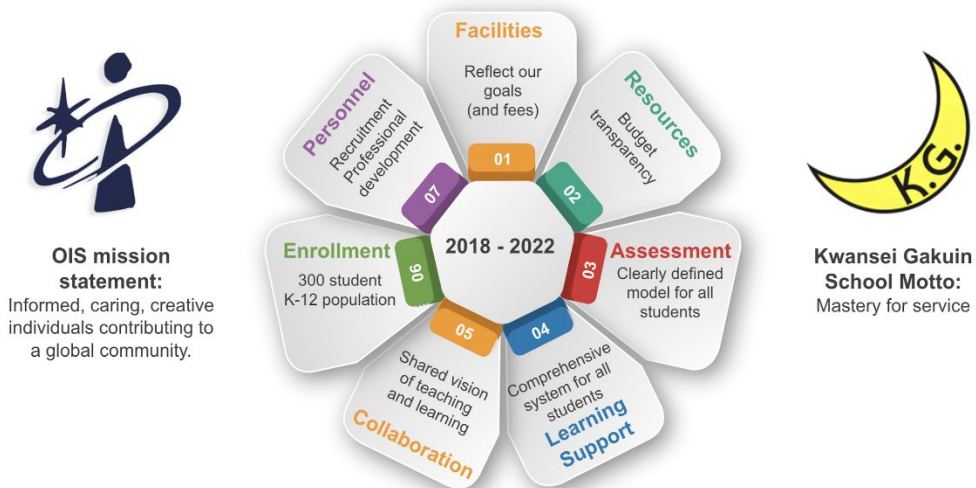
As the incoming Head of School, I have been evaluating our current situation with regard to the OIS Action Plan 2018-23. The targeted areas for improvement were highlighted in our WASC and IB accreditation reports. Progress is currently being made in each of the target areas and the specific goals set out in this document will help to drive continued school improvement into the future. They provide a clear and measurable focus for our school development.

We are also reviewing all other areas of school operations: administration, teaching and learning. Our general school planning will ensure that all other school activities necessary for WASC & IB will remain secure and exceed required quality levels.

【取り組みの全体像 Overview of plan】



OIS School-wide Action Plan - Focus Areas



以上